

Having trouble viewing this email? [Click here](#)

You're receiving this email because of your relationship with Zipper's Performance Products. Please [confirm](#) your continued interest in receiving email from us.

You may [unsubscribe](#) if you no longer wish to receive our emails.



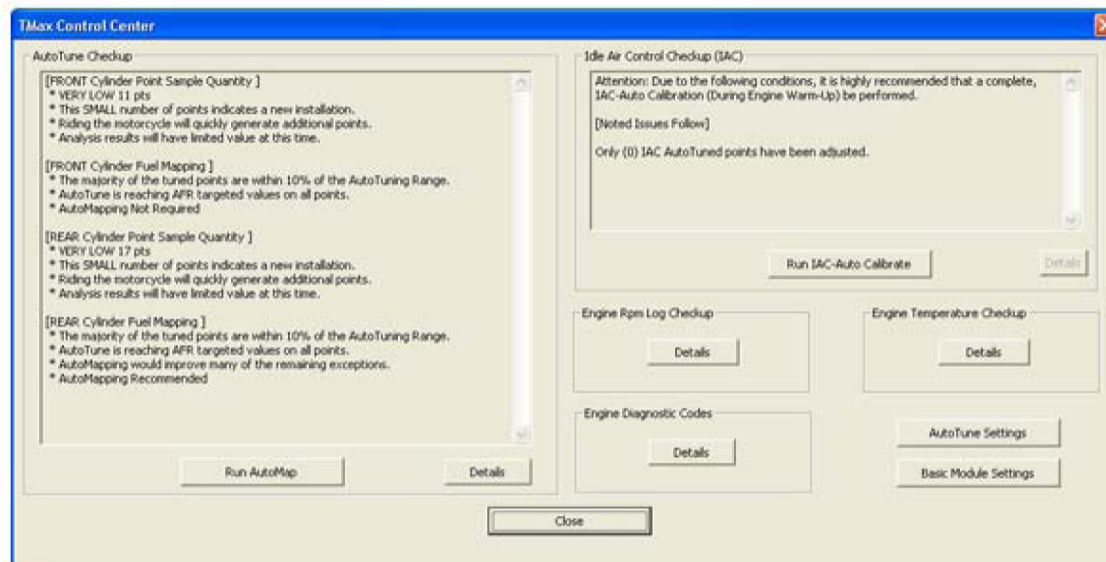
New Features! SmartLink Software 2009.0.5

Zipper's Performance Products - P: (410)579-2828
6655-A Amberton Drive, Elkridge MD 21075
www.ZippersPerformance.com - www.Thunder-Max.com

SmartLink Software

Dec 2009

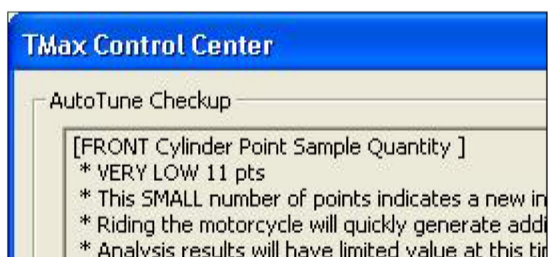
ThunderMax Control Center



The **TMax Control Center** is an easy to use, one stop resource center for software navigation of the most commonly used ThunderMax functions. Located in the top tool bar of your Smart Link software, **TMax Control Center** allows easy access to:

- Progress of the Auto-Tune system fuel adjustments
- IAC Calibration integrity
- Engine RPM and Temperature Logs
- Engine Diagnostic Codes
- Auto-Tune Settings
- Basic Module Settings

AutoTune Checkup

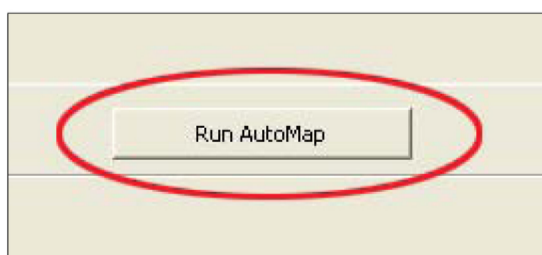


Upon logging run time on any engine, you now have quick access to recorded data regarding the current state of tune via the **"Auto Tune Checkup"** field.

At a glance, you will see interactive feedback with **"Tuned Point Analysis"** providing the user with recommendations and direction as to suggested actions required for optimal fuel calibration parameters.

If the engines fuel requirements are approaching the maximum limit of automatic fuel adjustment, there is now detection within the software to quickly review and determine the condition of the tune, while providing direction as to making quick refinements to all fuel parameters. This new function allows the user to quickly optimize fuel calibrations of any ThunderMax equipped engine.

AutoMap (Map Editing)



AutoMap (Map Editing) function can now be executed within the TMax Control Center by selecting the **"Run AutoMap"** button.

When using **Auto Map** function, all fuel base map points are reset and smoothed to the learned offset point values. The **Auto Map** feature refines the base map fuel calibration based on "Learned Parameters" established during engine run cycles. Applying learned

map refinements frees up the systems total learning capacity for additional map refinements as the engine is operated in varying ambient conditions.

ThunderMax owners can easily access these exciting new features by updating your existing software version through your Smartlink, or simply click the link below for the latest updates.

[Click Here! Download SmartLink v.2009.0.5](#)

Forward email

✉ [SafeUnsubscribe®](#)

This email was sent to rosie.v@zippersperformance.com by

rosie.v@zippersperformance.com.

[Update Profile/Email Address](#) | Instant removal with [SafeUnsubscribe™](#) | [Privacy Policy](#).

Email Marketing by

